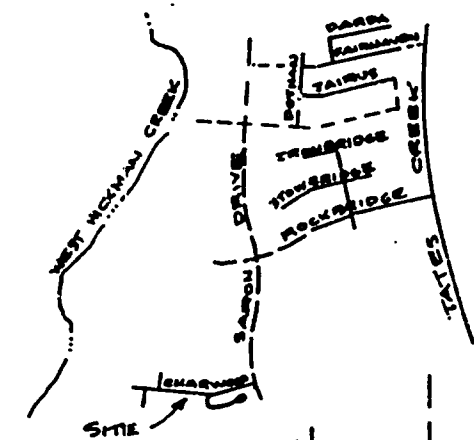
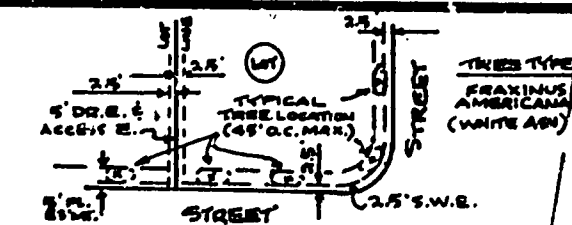


UTILITY EASEMENTS (MARKED U.E.) ALONG SIDE AND REAR LOT LINES ARE NOT FOR USE BY KENTUCKY AMERICAN WATER COMPANY, COLUMBIA GAS COMPANY OR THE LEXINGTON-FAYETTE URBAN COUNTY GOVERNMENT UNLESS SPECIFICALLY NOTED FOR THEIR USE ON SAID UTILITY EASEMENTS SHOWN ON THIS FINAL RECORD PLAN. THE DESIGNATION "S.L.E." INDICATES STREET LIGHT EASEMENT FOR PURPOSE OF UNDERGROUND ELECTRIC SERVICE TO STREET LIGHTS.

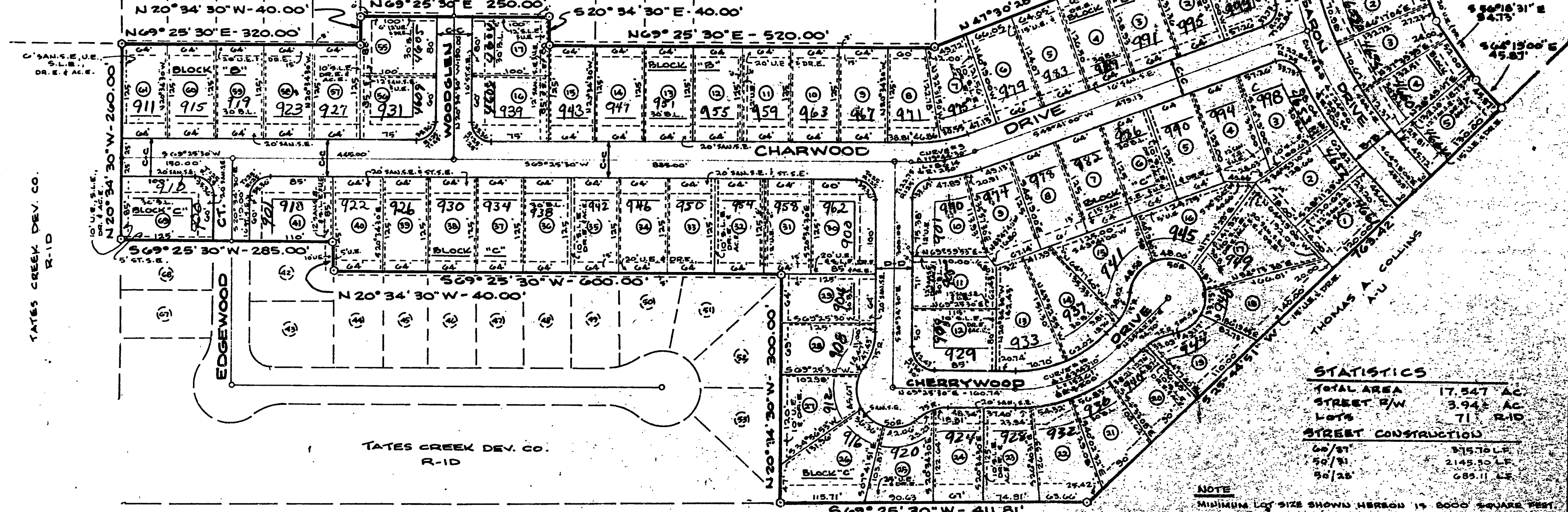


1. THERE IS A 5.0' WIDE D.E. PERMANENT PEDESTRIAN ACCESS EASEMENT FOR MAINTENANCE OF THE EXTERIOR PORTION OF THE ADJACENT LOT LINE WALL ALONG ALL SIDE LOT LINES ON THIS PLAN UNLESS OTHERWISE NOTED HEREON. THIS 5.0' WIDE EASEMENT IS CENTERED ON SAID LOT LINES AS SHOWN IN THE DETAIL AT RIGHT.



A SIDEWALK EASEMENT 2.5' IN WIDTH IS HEREBY ESTABLISHED ADJACENT TO THE PUBLIC RIGHTS OF WAY ON ALL LOTS ON THIS FINAL RECORD PLAN. SEE THE DETAIL AS-BE SHOWN FOR THIS SIDEWALK EASEMENT ARE NOT DRAWN ON INDIVIDUAL LOTS ON THIS PLAN TO AVOID CLUTTER.

VICINITY MAP



LOTS	BLOCK	TREES
1-5	"A"	2 EA.
1, 16, 56	"B"	4 EA.
2-15, 17, 55, 57-61	"B"	2 EA.
1, 2, 4-9, 11, 13-15, 19-21	"C"	2 EA.
24, 25, 28, 29, 31-40	"C"	2 EA.
3, 10, 12, 30, 41, 69	"C"	4 EA.
16-18, 22, 23, 26, 27	"C"	1 EA.

STATISTICS

TOTAL AREA	17,547 AC.
STREET R/W	3.94 AC.
LOTS	71 R-1D
STREET CONSTRUCTION	
60/81	575.10 LF.
50/51	2145.30 LF.
50/25	685.11 LF.

NOTE: MINIMUM LOT SIZE SHOWN HEREON IS 8000 SQUARE FEET.

OWNER'S CERTIFICATION

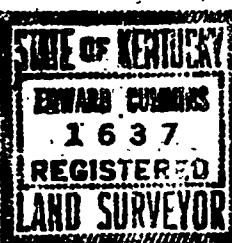
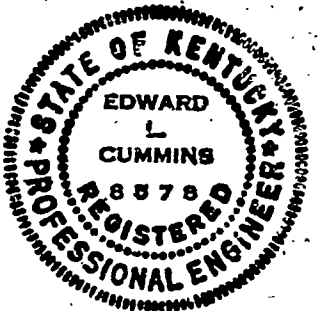
WE DO HEREBY CERTIFY THAT WE ARE THE OWNERS OF RECORD OF THE PROPERTY PLATTED HEREON WHICH IS RECORDED IN FC # 51 85 IN THE FAYETTE COUNTY CLERK'S OFFICE. DO HEREBY ADOPT THIS AS OUR PLAN OF LOTS FOR THIS PROPERTY...

Signature: Roger W. Bishop, Date: 7-19-85, Witness: Edward L. Cummins, Date: 7-13-85.

ENGINEER'S CERTIFICATION

I DO HEREBY CERTIFY THAT THIS RECORD PLAN WAS PREPARED BY ME OR UNDER MY DIRECTION. THAT ALL WORK PERFORMED BY ME OR UNDER MY DIRECTION, INCLUDING ENGINEERING DESIGN WAS DONE IN ACCORDANCE WITH THE PROVISIONS OF THE LAND SUBDIVISION REGULATIONS AND THE REQUIREMENTS OF THE PLANNING COMMISSION...

Signature: Edward L. Cummins, Date: 7-19-85.



ORDERED TO RECORD PAID \$12.00 INC. TAX AT 24.00

30th DAY OF JULY 1985 DONALD W. BLEVINS FAYETTE COUNTY CLERK

URBAN COUNTY ENGINEER'S CERTIFICATION

I HEREBY CERTIFY THAT THE IMPROVEMENT PLANS FOR THIS SUBDIVISION HAVE BEEN REVIEWED BY MY OFFICE AND IN CONFORMANCE WITH THE SUBDIVISION REGULATIONS, AND THE ESTIMATED COST FOR SUCH IMPROVEMENTS HAVE BEEN PREPARED BY MY OFFICE. I FURTHER CERTIFY THAT A PERFORMANCE BOND IN THE AMOUNT DETERMINED BY MY OFFICE TO COVER THE FULL COST OF REQUIRED IMPROVEMENTS HAS BEEN POSTED IN MY OFFICE BY THE DEVELOPER.

Signature: David Whitaker, Date: 7/24/85.

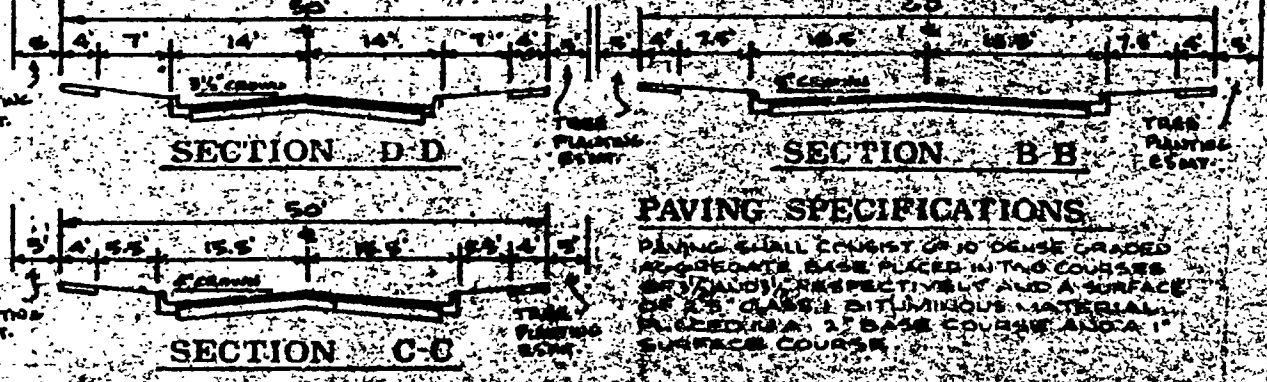
COMMISSION'S CERTIFICATION

I DO HEREBY CERTIFY THAT THIS RECORD PLAN WAS APPROVED BY THE URBAN COUNTY PLANNING COMMISSION AT ITS MEETING ON 7/16/85 AND IS NOW AVAILABLE FOR RECORDING.

Signature: Dale B. Roma, Date: 7/30/85.

NOTES

- ALL AREAS THAT HAVE BEEN DISTURBED BY GRADING SHALL HAVE TEMPORARY EROSION COVER PROVIDED. SUCH COVER SHALL CONSIST OF ANNUAL GRASSES, OR OTHER SEASONAL PLANTS OR TREES, AND SHALL BE MAINTAINED THROUGHOUT THE CONSTRUCTION PERIOD TO PREVENT EROSION.
- SANITARY SEWERS TO BE INSTALLED BY THE DEVELOPER IN ACCORDANCE WITH THE REQUIREMENTS OF URBAN COUNTY ENGINEER.
- SEWER MANHOLES SHALL NOT BE COVERED BY GRADING, SOILING OR ANY OTHER CONSTRUCTION OPERATION.
- ALL LOT FRONT DIMENSIONS IN CURVED PORTIONS OF STREET ARE CURVE CHORDS. STREET TREES SHALL BE PLANTED IN THE TREE PLANTING SPACES AT THE CURVE CHORDS OF 25 FEET AND SHALL BE MAINTAINED IN ACCORDANCE WITH ARTICLE 6-2 AND THE PLANTING MANUAL. INSTALLATION SHALL BE 2-3/4" CALIBRE AND SHALL CONSIST OF FRANKLIN AMERICANA (WHITE ASH) TYPE.



DEVELOPERS - TATES CREEK DEV. CO., BALL HOMES, INC. & STANLEY LAND CO. 3399 TATES CREEK ROAD LEX, KY. ENGINEER CUMMINS ENGR. & SURVEYING CO. 3198 CUSTER DR-SUITE 104-LEX, KY.

FINAL RECORD PLAN ASHMOOK SUBDIVISION-Unit 1a (FORMERLY TATES CREEK FARM TRACT 1 PARCEL 2) LEXINGTON, FAYETTE COUNTY, KENTUCKY DATE: JULY, 1985